



# Fact Sheet

HABITAT CONSERVATION – PUBLIC NOTICE

July 2010

## BPA funds Kittitas County habitat for threatened steelhead, bull trout

**Location:** Lower Easton reach of the Yakima River, Kittitas County, Wash. (**SEE MAP**). A new map was provided Aug. 10, 2010, to more accurately depict the acquisition. The map is for general reference only. Questions regarding the boundaries of this easement should be directed to the BPA contacts listed at the end of this fact sheet.

**Acres:** 432.3

**Purpose:** The Bonneville Power Administration is partnering with the Washington Department of Fish and Wildlife and the Yakama Nation's Yakima/Klickitat Fisheries Project to purchase a conservation easement along the Yakima River. The purchase will be co-funded by BPA and WDFW through grants from the Washington Wildlife and Recreation Program and the Salmon Recovery Funding Board. Funding this acquisition will partially mitigate for fish habitat losses due to the construction and operation of federal hydroelectric facilities on the Columbia River. The purchase is expected to be finalized in August 2010.

**Type of action:** Under the terms of the easement the existing landowner will retain ownership of the land with development restrictions placed on the current landowner and on subsequent landowners, ensuring that high quality habitat will be protected in perpetuity by remaining in a natural open space condition. The protected habitat will benefit threatened mid-Columbia River steelhead and Columbia River bull trout, as well as summer/fall-run chinook salmon and other native fish species.

**Land management:** Once the easement has been acquired, WDFW and the Yakama Nation will develop a management plan to guide the protection and enhancement of resources on the property. The public will have an opportunity to provide input on the management plan. Pending BPA approval, no land management activities would occur other than maintenance and protection, such as weed control or fence maintenance within the easement area.

### For more information

**BONNEVILLE POWER ADMINISTRATION:**

Sandra Fife, Project Manager, 800-622-4519 or 503-230-3678, [SAFife@bpa.gov](mailto:SAFife@bpa.gov).

Lisa Wright, Environmental Compliance Lead 800-622-4519 or 503-230-4047, [LSWright@bpa.gov](mailto:LSWright@bpa.gov).

**YAKIMA/KLICKITAT FISHERIES PROJECT:**

Scott Nicolai, Yakima Subbasin Habitat Coordinator, 509-962-6142, [YKFP@fairpoint.net](mailto:YKFP@fairpoint.net).

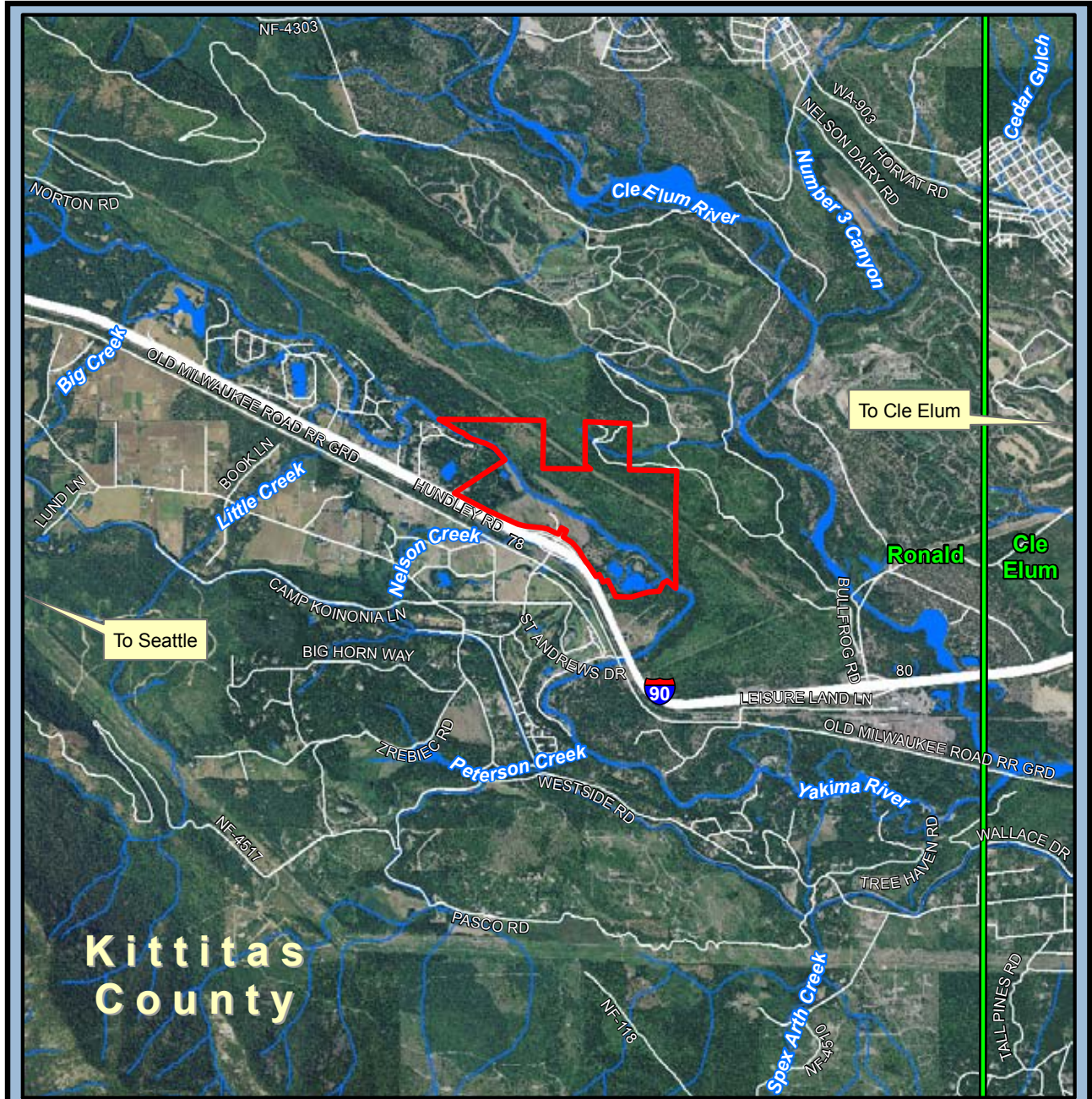
### BPA Fish and Wildlife Program

BPA's fish and wildlife program protects and preserves valuable fish and wildlife habitat throughout the Northwest. Since its inception in 1980, BPA has set aside more than 300,000 acres of land, protecting and preserving habitat for hundreds of species. The program protects habitat from development, either through outright purchase of land or by placing conservation easements on privately owned property. BPA works in partnership with conservation groups, local tribes and state fish and wildlife management agencies.





# Yakima Basin

## Kittitas County, Washington



**Kittitas County Conservation Easement Acquisition**  
**Updated August 2010**  
**Ronald Quadrangle**  
**(432.3 Acres)**

-  Subject Property
-  Quad Name and Boundary

0 0.25 0.5 1 Miles

