

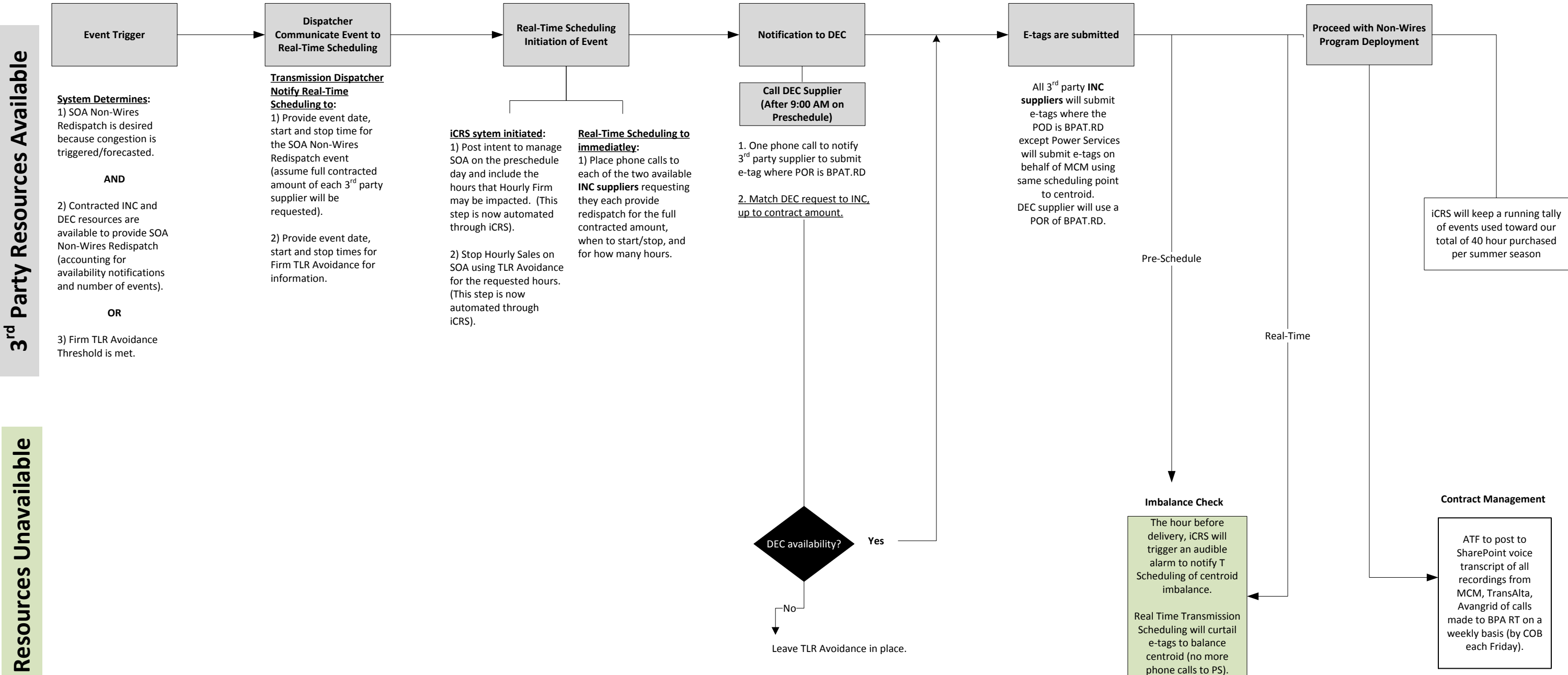
# FY18 SOA Non-Wires Pre-Schedule Process Flow Chart

Last updated: 6/13/18

**Key Assumptions:**

1. The entire portfolio of 3<sup>rd</sup> party supplied INCs & DEC will be dispatched as a pair, between four and six hours per event. To obtain the maximum possible flowgate relief (~ 100MW), BPA expects to use the full 40 hours of relief during each summer period.
2. Pre-Schedule is the WECC Pre-Schedule day for the afternoon with the event. Real-Time is the day of the event. After-the-Fact captures all activity beyond the event deployment (see separate process chart).

Time	Pre-Schedule			Real - Time			
Owner	System	Dispatch	RT Scheduling	RT Scheduling	3rd Party Providers	RT Scheduling	System
4:00 AM				9:00 AM (up to Pre-Schedule)	3:00 PM		
						Event End	



\*\*\*Internal & Pre-Decisional\*\*\*